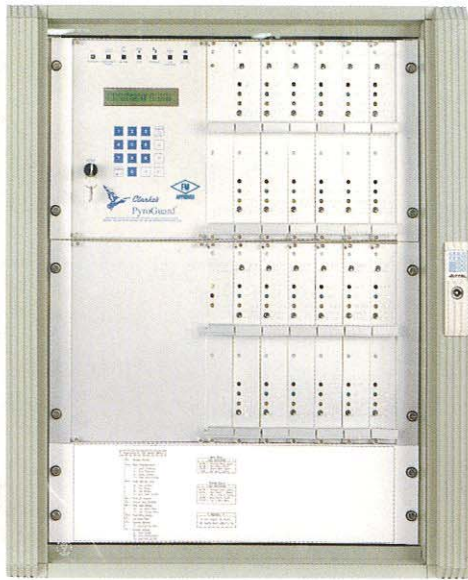
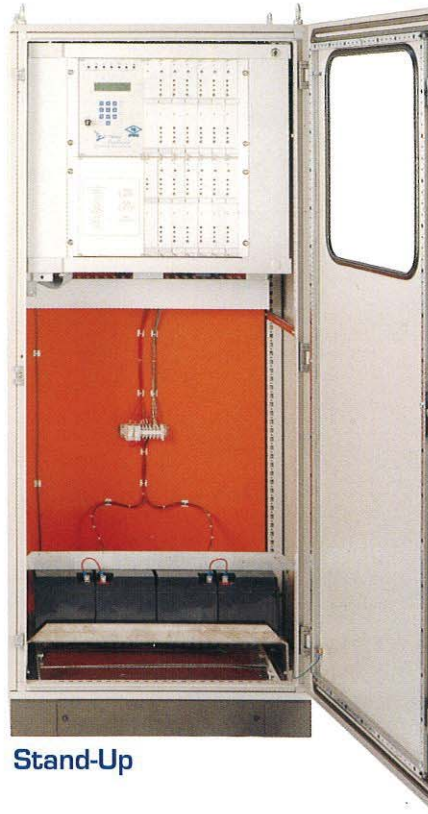


(12 and 24 Zone)



Wall-Mount



Stand-Up



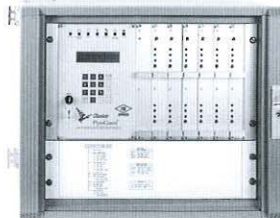
CXL Control Console

- Event recorder
- Automatic & manual testing & diagnostics
- Independent zone inspection (ability to disarm individual cards & zone)
- Spark counting feature
- Water flow confirmation at each extinguishment valve
- Remote I/O compatible
- HMI interface available
- Modular construction for easy maintenance
- Two standard configurations (12 zone and 24 zone)
- Dust tight enclosure (wall-mount or stand-up)
- Meets or exceeds NFPA 72 standards
- Constant voltage power conditioner
- Two year warranty

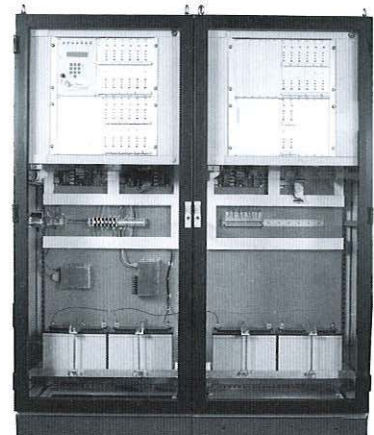
CXL Control Console (12 and 24 Zone)

I/O Cards

- Stand alone I/O Cards with 64K flash RAM memory (no battery required for event storage)
- Various sensor and valve combinations are configurable
- One (1) primary and one (1) secondary (NC/NO) relay output per zone, (two zones per card)
- Zone disable switch to facilitate easy system maintenance



CXL-12 Wall Mount



CXL-48 Stand-Up Console

TECHNICAL DATA

Event Recorder:

- Summation Controller capable of storing up to 10,240 events (over one year of events based on 24 events per day)

Display:

- 2 line by 24 character vacuum fluorescent display

I/O Ports:

- RS232 computer interface
- RS485 HMI interface

Relay outputs:

- Four (4) NC/NO programmable relay outputs
- One (1) NC/NO summation alarm output
- One (1) NC/NO summation trouble output

I/O Outputs:

- Four (4) NC/NO outputs per I/O card
- Relay outputs rated at 120/240 VAC 5 AMP
- All inputs and outputs are fused

Summation

I/O Inputs:

- One (1) Remote reset input
- Two (2) Low H₂O pressure input
- Four (4) H₂O flow input

Power:

- 120 VAC +/- 10% 50-60 Hz, 8 AMP
- 240 VAC +/- 10% 50-60 Hz, 8 AMP

Sensors/Zone:

- 1 - 8

Battery Backup:

- 24 hours (meets NFPA 72)

Dimensions:

- CXL-12 W 23.62" x H 18.39" x D 19.69"
- CXL-24 W 23.62" x H 28.90" x D 19.69"
- CXL-24 Stand-up W 32" x H 75" x 20"

Enclosure Rating:

- NEMA 12 dust tight

Weight:

- 93 lbs. - 12 zone
- 113 lbs. - 24 zone
- 515 lbs. - 24 zone Stand-up



Clarke's Sheet Metal, Inc.

660 Conger Street • P.O. Box 2428
Eugene, OR USA 97402-0139
541-343-3395
Fax 541-345-1447

Clarke's International, Inc.

660 Conger Street • P.O. Box 2428
Eugene, OR USA 97402-0139
541-343-3395
Fax 541-345-1447

www.pyroguard.com • Email - quality@pyroguard.com